

GC79..F

BAR CLAMP FOR HOCKEY PUK DEVICES

- Clamping total thickness of assembly from 11.5mm to 140.5mm
- Pre-loaded to the specific clamping force ($F = 10 \div 20$ kN)
- Maximum device diameter: $L = 66$ mm
- Surface passivation to provide extra protection
- Various lengths of bolts and insulating cups
- Flat clamping head for even clamping force application
- Four styles available
- User friendly clamping force indicator
- UL94 certified insulation material
- RoHS compliant

Characteristic		Unit	Types	Testing conditions	Values		
					Min	Typ	Max
m	Mass	g	GC79S...F		410		510
			GC79B...F		690		830
F	Clamping Force*	kN	GC79...10F			10	
			GC79...12F			12	
			GC79...15F			15	
			GC79...20F			20	
ΔF	Clamping Force tolerance						$\pm 10\%$
V_{INS}	Insulation Voltage	V		50 Hz, RMS, 60 s		3000	
	Insulating Material				PPO** or PPS***		
	UL Files		PPO		E121562		
			PPS		E95746		
T	Operating temperature range	°C	PPO		-30		110
			PPS		-30		230
T_{stg}	Storage temperature range	°C	PPO		-20		135
			PPS		-40		210
D_s	Surface creepage distance	mm				28	
D_a	Air strike distance	mm				20.3	
CTI	Comparative Tracking Index	V	PPO	According to UL746		225.0	
			PPS	According to IEC112/3rd		250.0	
	Flammability	mm	PPO	UL94 V-1 Flame class rating		1.5	
				UL94 V-0 Flame class rating		6.0	
			PPS	UL94 V-0 Flame class rating		1.6	

* Polyphenylene Oxide

** Polyphenylene Sulfide

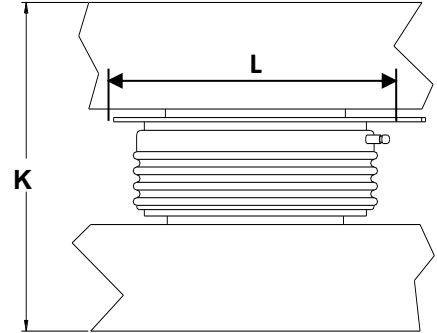
*** Comparative Tracking Index

ORDERING INFORMATION TABLE

Use this part numbering system to order

GC79	B	N	B	A	20	F	S	H	X	L
	(1)	(2)	(3)	(4)	(5)	(6)	(7)	(8)	(9)	

(1) Construction type:	B = with reaction bar S = without reaction bar
(2) Insulator position:	N = on load bar R = on reaction bar
(3) Insulator code:	_ = no insulating cup other : see table below
(4) Bolt code:	_ = no bolt other : see table below
(5) Clamping force (in kN):	12÷24, with step of 1 kN
(6) Special accessories	blank = no accessories S = extra bar spacer (*) D = pressure disc in place of distribution bar
(7) Insulating cup material	0 = standart PPO insulating cup H high temperature PPS insulating cup
(8) Bolt steel type	0 = standard 8.8 steel bolts X = A2 stainless steel bolts (**)
(9) Bar thickness	0 = standart bar thickness (15mm)



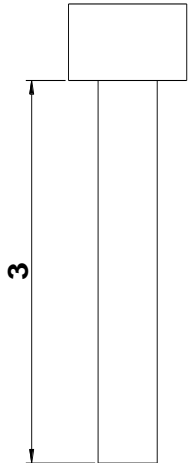
K: Total thickness of the assembly to be clamped
L: Max inner diameter allowable

 (*) Needed to reduce S_{Min} if a lower allowed clearance is required

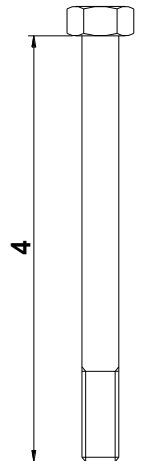
(**) Suggested for high current applications, magnetic sensitive applications or any application working in very high E.M. fields

Type GC79BN...F: suggested insulator/bolt types

Allowed clearance S		Insulator choice		Bolt choice		Max height
S_{Min} [mm]	S_{Max} [mm]	(3)	Ins. Length [mm]	(4)	Bolt Length [mm]	T [mm]
11.5	25.5	Z	34	U	70	92
16.5	30.5	Z	34	V	75	97
21.5	35.5	A	50	W	80	102
31.5	45.5	A	50	Y	90	112
41.5	55.5	B	70	Z	100	122
51.5	65.5	B	70	A	110	132
61.5	75.5	B	70	B	120	142
65.5	85.5	C	95	C	130	158
75.5	95.5	C	95	D	140	168
85.5	105.5	C	95	E	150	178
95.5	115.5	D	120	F	160	188
105.5	125.5	D	120	G	170	198

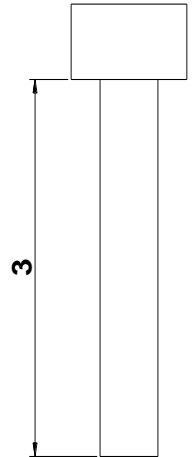

Type GC79BR...F: suggested insulator/bolt types

Allowed clearance S		Insulator choice		Bolt choice		Max height
S_{Min} [mm]	S_{Max} [mm]	(3)	Ins. Length [mm]	(4)	Bolt Length [mm]	T [mm]
11.5	25.5	Z	34	U	70	99
16.5	30.5	Z	34	V	75	104
21.5	35.5	A	50	W	80	109
31.5	45.5	A	50	Y	90	119
41.5	55.5	B	70	Z	100	129
51.5	65.5	B	70	A	110	139
61.5	75.5	B	70	B	120	149
65.5	85.5	C	95	C	130	159
75.5	95.5	C	95	D	140	169
85.5	105.5	C	95	E	150	179
95.5	115.5	D	120	F	160	189
105.5	125.5	D	120	G	170	199



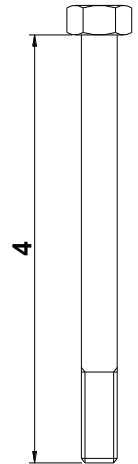
Type GC79SN...F: suggested insulator/bolt types

Allowed clearance S		Insulator choice		Bolt choice		Max height
S _{Min} [mm]	S _{Max} [mm]	(3)	Ins. Length [mm]	(4)	Bolt Length [mm]	T [mm]
11.5	25.5	Z	34	U	70	78
16.5	30.5	Z	34	V	75	83
21.5	35.5	A	50	W	80	88
31.5	45.5	A	50	Y	90	98
41.5	55.5	B	70	Z	100	108
51.5	65.5	B	70	A	110	118
61.5	75.5	B	70	B	120	128
65.5	85.5	C	95	C	130	138
75.5	95.5	C	95	D	140	148
85.5	105.5	C	95	E	150	158
95.5	115.5	D	120	F	160	168
105.5	125.5	D	120	G	170	178

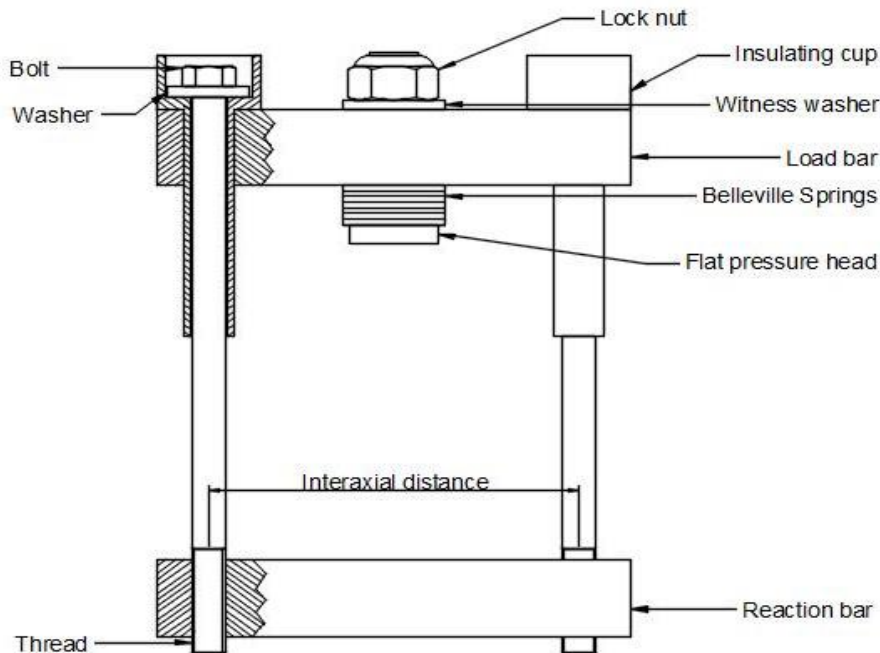


Type GC79SR...F: suggested insulator/bolt types

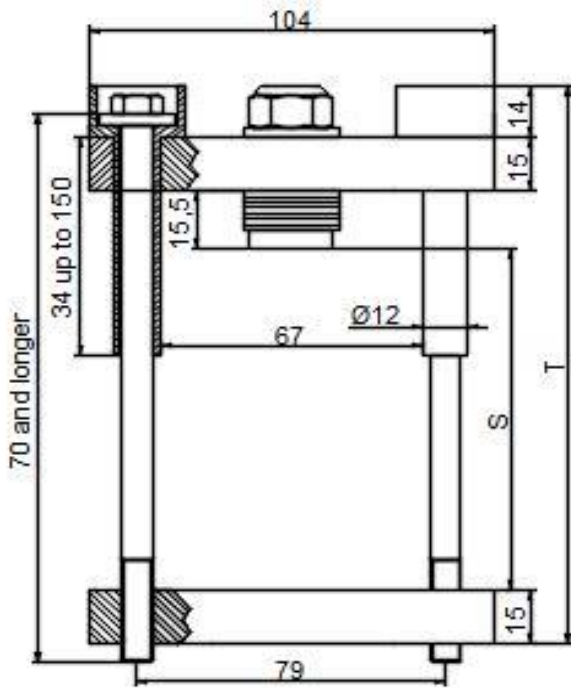
Allowed clearance S		Insulator choice		Bolt choice		Max height
S _{Min} [mm]	S _{Max} [mm]	(3)	Ins. Length [mm]	(4)	Bolt Length [mm]	T [mm]
26.5	40.5	Z	34	U	70	99
31.5	45.5	Z	34	V	75	104
36.5	50.5	A	50	W	80	109
46.5	60.5	A	50	Y	90	119
56.5	70.5	B	70	Z	100	129
66.5	80.5	B	70	A	110	139
76.5	90.5	B	70	B	120	149
80.5	100.5	C	95	C	130	159
90.5	110.5	C	95	D	140	169
100.5	120.5	C	95	E	150	179
110.5	130.5	D	120	F	160	189
120.5	140.5	D	120	G	170	199



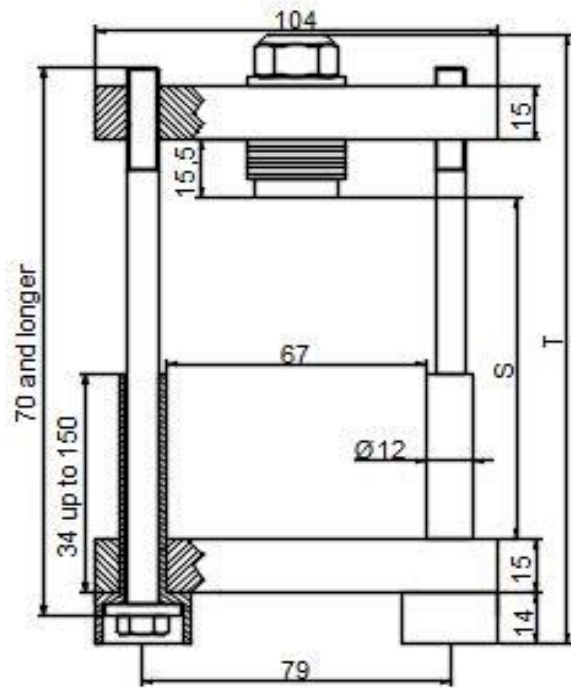
BAR CLAMP COMPONENTS LEGEND



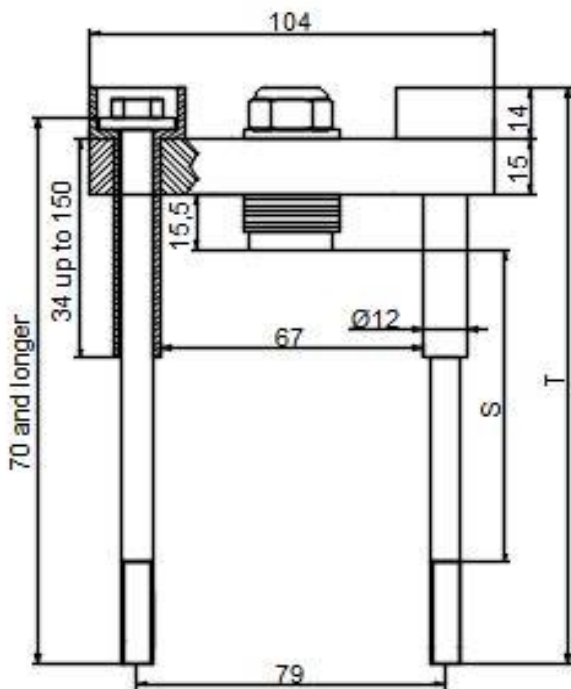
BAR CLAMP OUTLINES



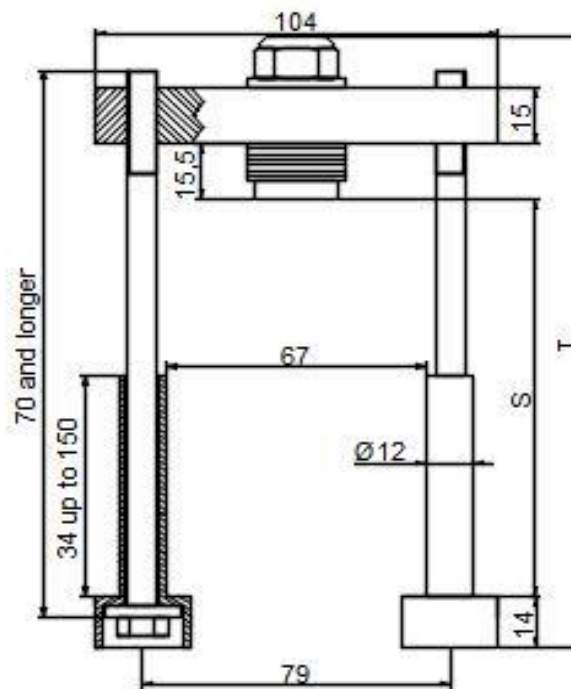
GC79BN...F



GC79BR...F

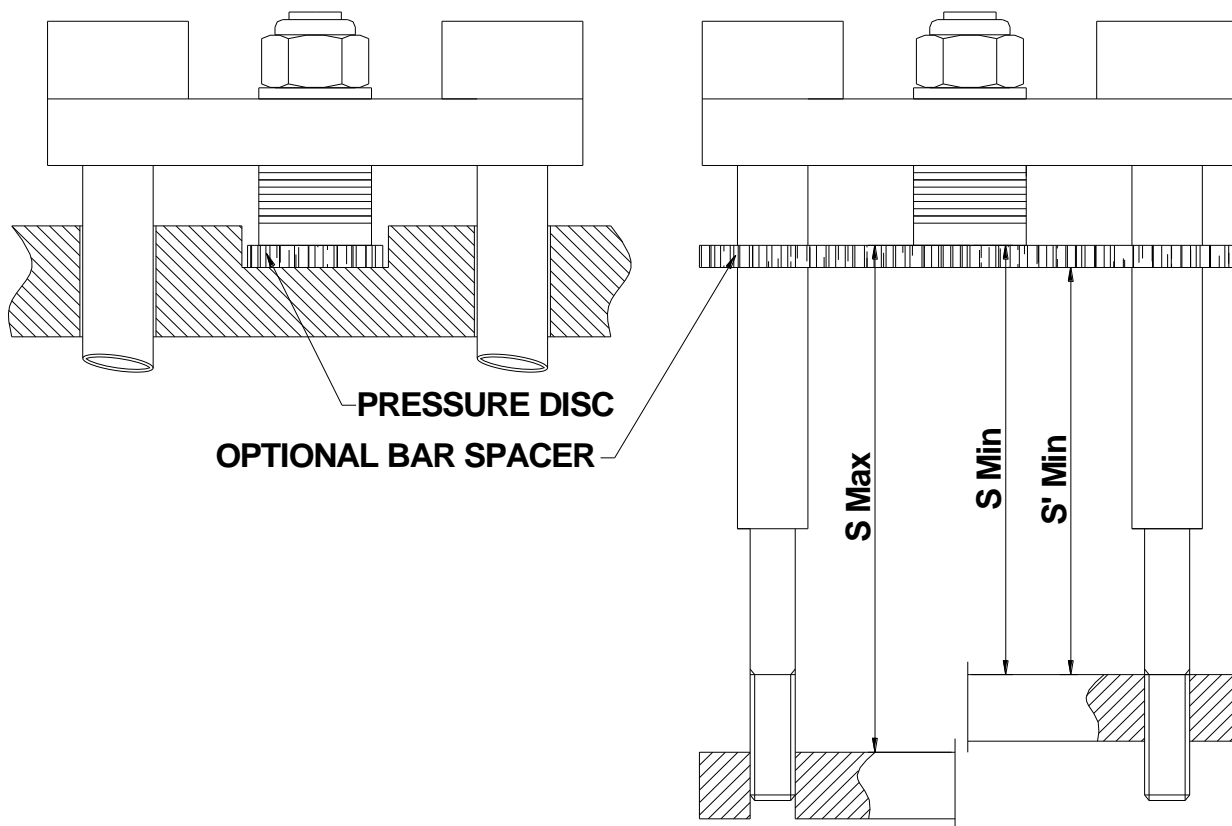


GC79SN...F



GC79SR...F

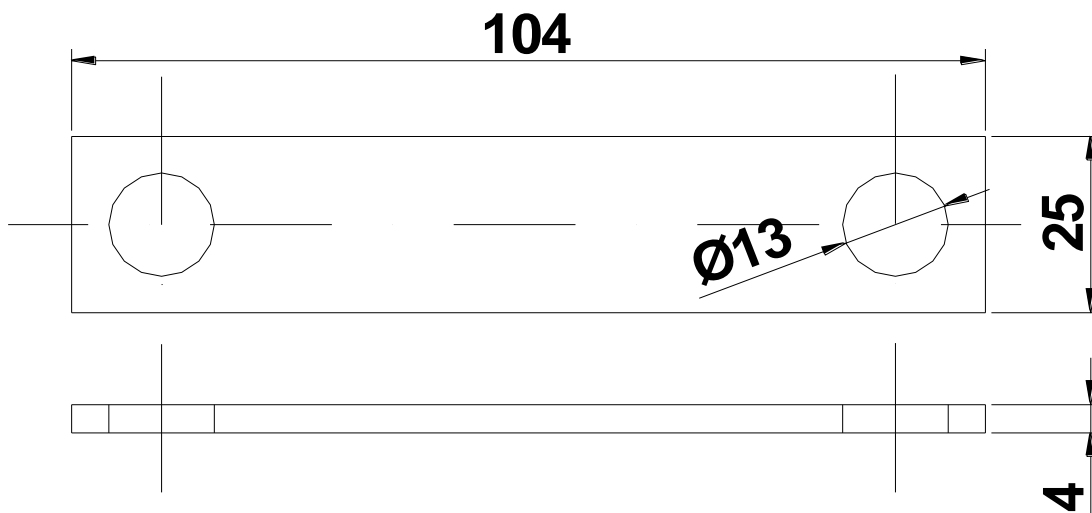
Dimensions in mm - Tolerances according to ISO 2768 MK



SPECIAL ACCESSORIES

The following special accessories are available on request (see ordering information table)

Bar spacer



Dimensions in mm - Tolerances according to ISO 2768 MK

In the interest of product improvement Green Power Solutions reserves the right to change any specification given in this data sheet without notice.