

GC79...R

BAR CLAMP FOR HOCKEY PUK DEVICES

- Clamping total thickness of assembly from 0.5mm to 133.5mm
- Pre-loaded to the specific clamping force ($F = 10 \div 20$ kN)
- Maximum device diameter: $L = 66$ mm
- Surface passivation to provide extra protection
- Various lengths of bolts and insulating cups
- Round shaped clamping head for even clamping force application
- Four styles available
- User friendly clamping force indicator
- UL94 certified insulation material
- RoHS compliant



Characteristic		Unit	Types	Testing conditions	Values		
					Min	Typ	Max
m	Mass	g	GC79S...R		550		650
			GC79B...R		830		970
F	Clamping Force*	kN	GC79...10R			10	
			GC79...12R			12	
			GC79...15R			15	
			GC79...20R			20	
ΔF	Clamping Force tolerance						$\pm 10\%$
V _{ins}	Insulation Voltage	V		50 Hz, RMS, 60 s		3000	
	Insulating Material				PPO** or PPS***		
	UL Files		PPO		E121562		
		PPS		E95746			
T	Operating temperature range	°C	PPO		-30		110
			PPS		-30		230
T _{stg}	Storage temperature range	°C	PPO		-20		135
			PPS		-40		210
D _s	Surface creepage distance	mm				28	
D _a	Air strike distance	mm				20.3	
CTI	Comparative Tracking Index	V	PPO	According to UL746		225.0	
			PPS	According to IEC112/3rd		250.0	
	Flammability	mm	PPO	UL94 V-1 Flame class rating		1.5	
				UL94 V-0 Flame class rating		6.0	
			PPS	UL94 V-0 Flame class rating		1.6	

* Polyphenylene Oxide

*** Polyphenylene Sulfide

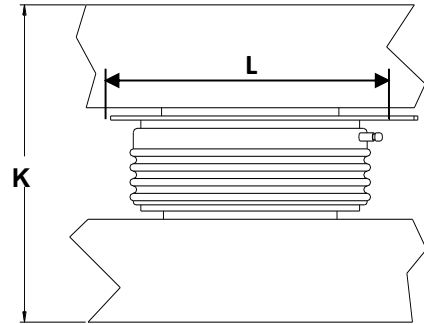
**** Comparative Tracking Index

ORDERING INFORMATION TABLE

Use this part numbering system to order

GC79	B	N	B	A	20	R	S	H	X	L
	(1)	(2)	(3)	(4)	(5)	(6)	(7)	(8)	(9)	

(1) Construction type:	B = with reaction bar S = without reaction bar
(2) Insulator position:	N = on load bar R = on reaction bar
(3) Insulator code:	_ = no insulating cup other : see table below
(4) Bolt code:	_ = no bolt other : see table below
(5) Clamping force (in kN):	10÷20, with step of 1 kN
(6) Special accessories	blank = no accessories S = extra bar spacer (*) D = pressure disc in place of distribution bar
(7) Insulating cup material	0 = standart PPO insulating cup H high temperature PPS insulating cup
(8) Bolt steel type	0 = standard 8.8 steel bolts X = A2 stainless steel bolts (**)
(9) Bar thickness	0 = standart bar thickness (15mm)



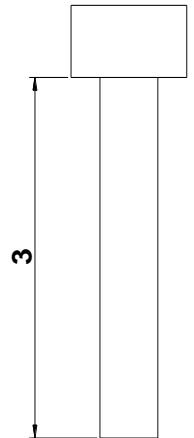
K: Total thickness of the assembly to be clamped
L: Max inner diameter allowable

(*) Needed to reduce S_{Min} if a lower allowed clearance is required

(**) Suggested for high current applications, magnetic sensitive applications or any application working in very high E.M. fields

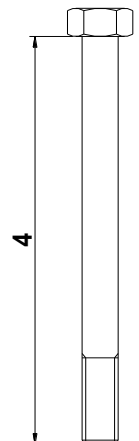
Type GC79BN...R: suggested insulator/bolt types

Allowed clearance S		Insulator choice		Bolt choice		Max height
S_{Min} [mm]	S_{Max} [mm]	(3)	Ins. Length [mm]	(4)	Bolt Length [mm]	T [mm]
0.5	14.5	Z	34	V	75	97
5.5	19.5	A	50	W	80	102
15.5	29.5	A	50	Y	90	112
25.5	39.5	B	70	Z	100	122
35.5	49.5	B	70	A	110	132
45.5	59.5	B	70	B	120	142
49.5	69.5	C	95	C	130	158
59.5	79.5	C	95	D	140	168
69.5	89.5	C	95	E	150	178
79.5	99.5	D	120	F	160	188
89.5	109.5	D	120	G	170	198
99.5	119.5	D	120	H	180	208



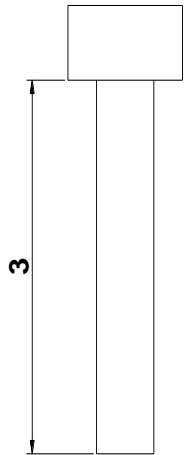
Type GC79BR...R: suggested insulator/bolt types

Allowed clearance S		Insulator choice		Bolt choice		Max height
S_{Min} [mm]	S_{Max} [mm]	(3)	Ins. Length [mm]	(4)	Bolt Length [mm]	T [mm]
0.5	14.5	Z	34	V	75	104
5.5	19.5	Z	34	W	80	109
15.5	29.5	A	50	Y	90	119
25.5	39.5	B	70	Z	100	129
35.5	49.5	B	70	A	110	139
45.5	59.5	B	70	B	120	149
49.5	69.5	C	95	C	130	159
59.5	79.5	C	95	D	140	169
69.5	89.5	C	95	E	150	179
79.5	99.5	D	120	F	160	189
89.5	109.5	D	120	G	170	199
99.5	119.5	D	120	H	180	209



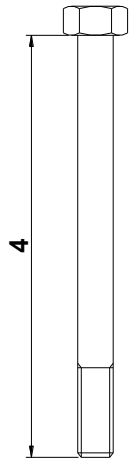
Type GC79SN...R: suggested insulator/bolt types

Allowed clearance S		Insulator choice		Bolt choice		Max height
S _{Min} [mm]	S _{Max} [mm]	(3)	Ins. Length [mm]	(4)	Bolt Length [mm]	T [mm]
4.5	18.5	Z	34	U	70	78
9.5	23.5	Z	34	V	75	83
14.5	28.5	A	50	W	80	88
24.5	38.5	A	50	Y	90	98
34.5	48.5	B	70	Z	100	108
44.5	58.5	B	70	A	110	118
54.5	68.5	B	70	B	120	128
58.5	78.5	C	95	C	130	138
68.5	88.5	C	95	D	140	148
78.5	98.5	C	95	E	150	158
88.5	108.5	D	120	F	160	168
98.5	118.5	D	120	G	170	178

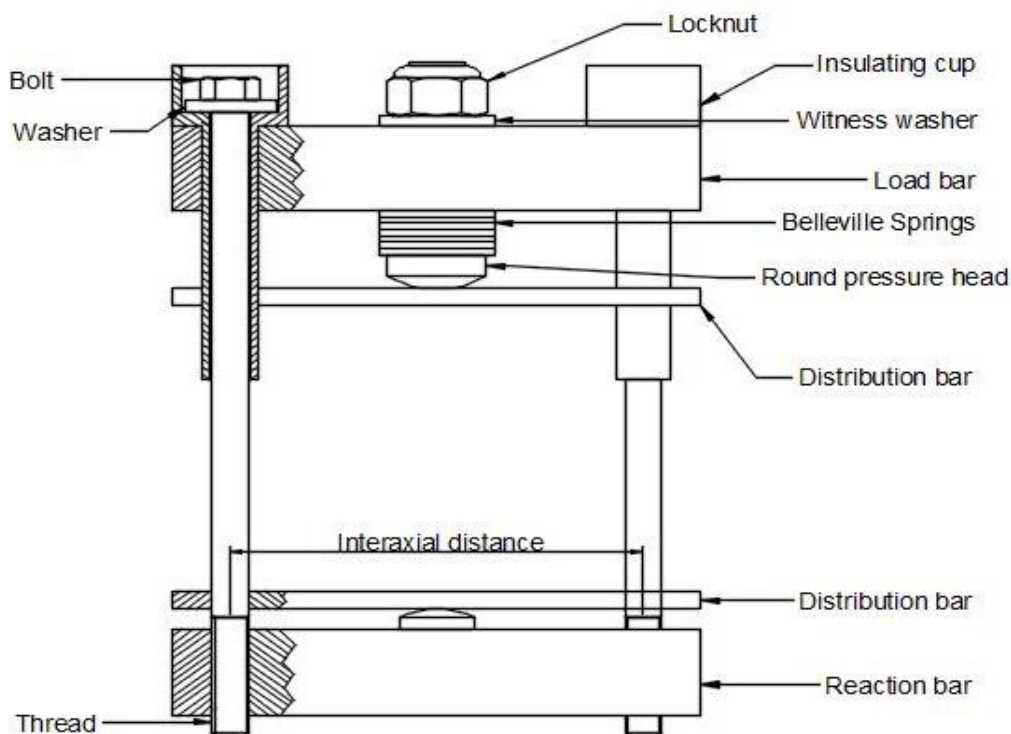


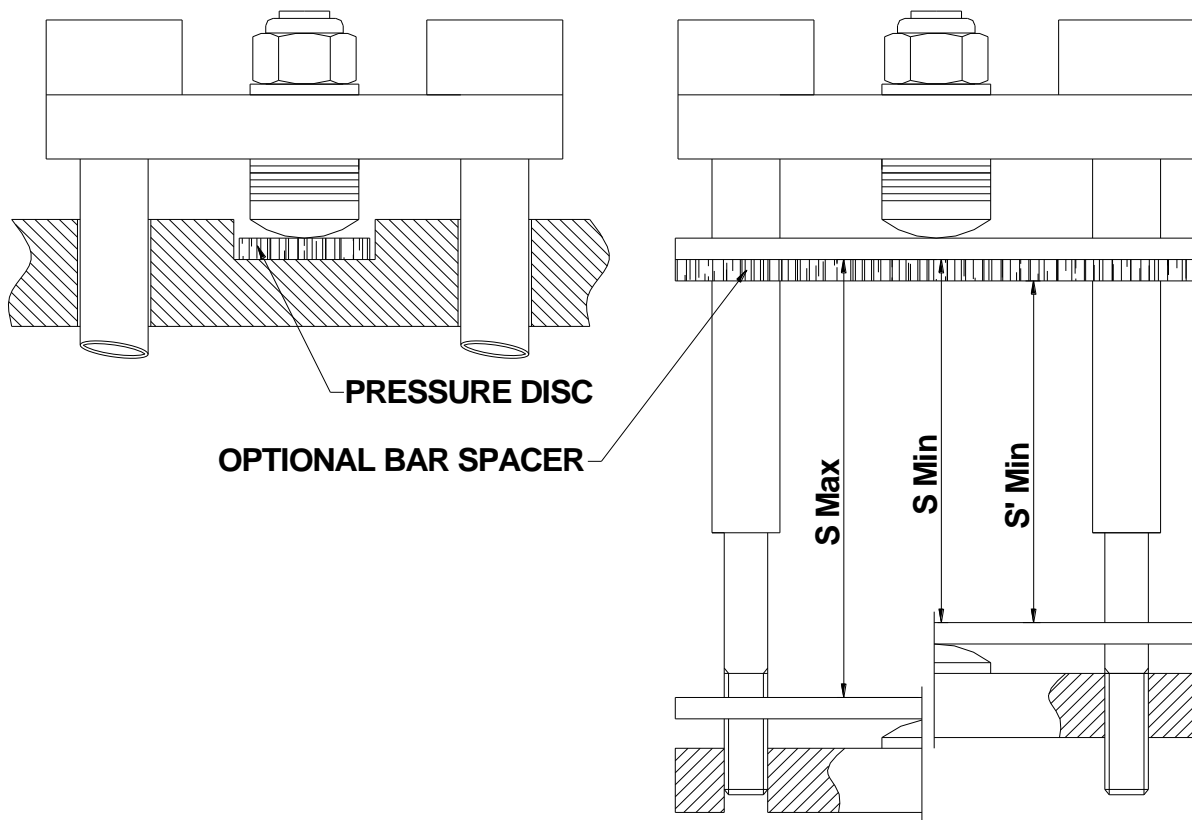
Type GC79SR...R: suggested insulator/bolt types

Allowed clearance S		Insulator choice		Bolt choice		Max height
S _{Min} [mm]	S _{Max} [mm]	(3)	Ins. Length [mm]	(4)	Bolt Length [mm]	T [mm]
19.5	33.5	Z	34	U	70	106
24.5	38.5	Z	34	V	75	111
29.5	43.5	A	50	W	80	116
39.5	53.5	A	50	Y	90	126
49.5	63.5	B	70	Z	100	136
59.5	73.5	B	70	A	110	146
69.5	83.5	B	70	B	120	156
73.5	93.5	C	95	C	130	172
83.5	103.5	C	95	D	140	182
93.5	113.5	C	95	E	150	192
103.5	123.5	D	120	F	160	202
113.5	133.5	D	120	G	170	212



BAR CLAMP COMPONENTS LEGEND

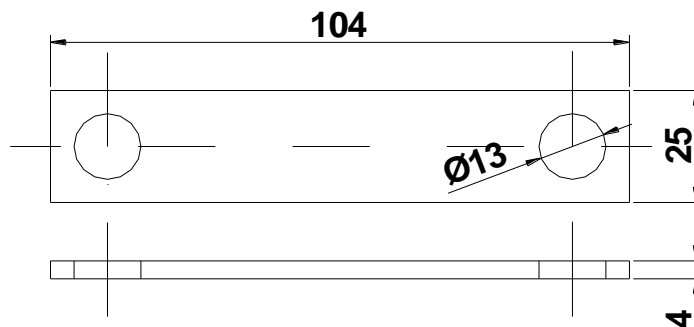




SPECIAL ACCESSORIES

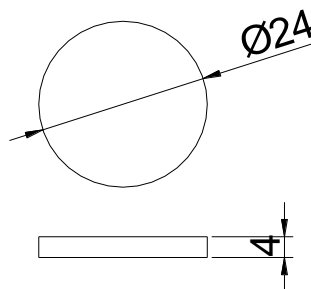
The following special accessories are available on request (see ordering information table)

Bar spacer



Pressure disc

Useful for grooved heatsink
Suggested groove diameter 27mm +/- 0.5



Dimensions in mm - Tolerances according to ISO 2768 MK

In the interest of product improvement Green Power Solutions reserves the right to change any specification given in this data sheet without notice.