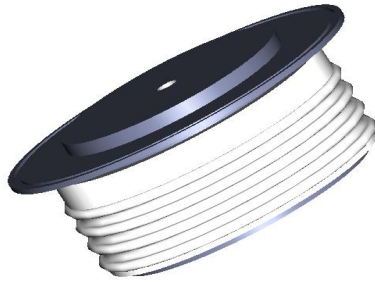


GPDN2167

RECTIFIER DIODE



BLOCKING VOLTAGE UP TO **1800 V**
AVERAGE CURRENT **1670 A**
SURGE CURRENT **20 kA**

BLOCKING CHARACTERISTICS

Characteristic		Conditions	Value
V _{RRM}	Repetitive peak reverse voltage		1800 V
V _{RSM}	Non-repetitive peak reverse voltage		1900 V
I _{RRM}	Repetitive peak reverse current, max.	V _{RRM} , single phase, half wave, T _{jmax}	70 mA

FORWARD CHARACTERISTICS

I _{F(AV)}	Average forward current	Sine wave, 180° conduction, T _h = 55°C	1670 A
I _{F(RMS)}	R.M.S. forward current	Sine wave, 180° conduction, T _h = 55°C	2623 A
I _{FSM}	Surge forward current	Non rep. half sine wave, 50 Hz, V _R = 0 V, T _j = T _{jmax}	20 kA
I ² t	I ² t for fusing coordination		2000 kA ² s
V _{F(TO)}	Threshold voltage	T _j = T _{jmax}	0.95 V
r _F	Forward slope resistance	T _j = T _{jmax}	0.25 mΩ
V _{FM}	Peak forward voltage, max	Forward current I _F = 2000 A, T _j = T _{jmax}	1.45 V

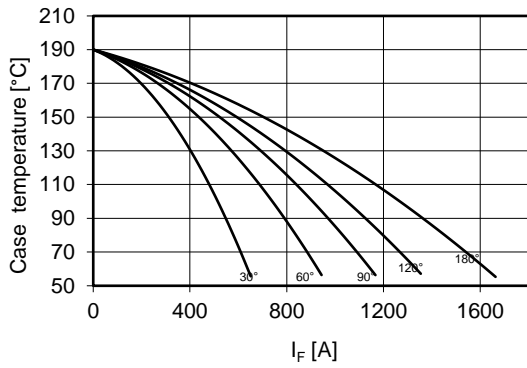
SWITCHING CHARACTERISTICS

Q _{rr}	Reverse recovery charge, typ	T _j = T _{jmax} , I _F = A, di/dt = A/μs	μC
I _{rr}	Reverse recovery current		A

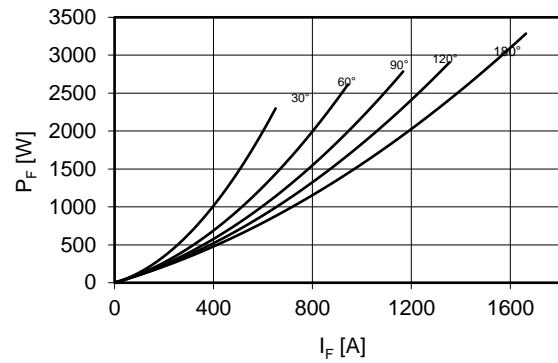
THERMAL AND MECHANICAL CHARACTERISTICS

R _{th(j-c)}	Thermal resistance (junction to case)	Double side cooled	0.035 °C/W
R _{th(c-h)}	Thermal resistance (case to heatsink)	Double side cooled	0.006 °C/W
T _{jmax}	Max operating junction temperature		190 °C
T _{stg}	Storage temperature		-40 / 190 °C
F	Clamping force ± 10%		15 kN
	Mass		280 g

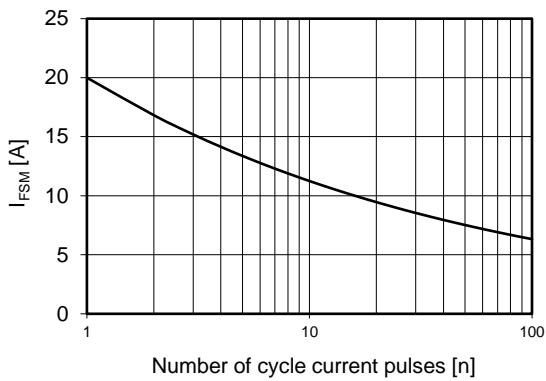
Current rating - sine wave



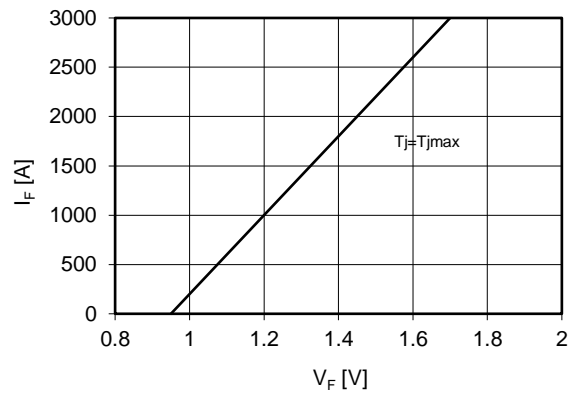
Power loss - sine wave



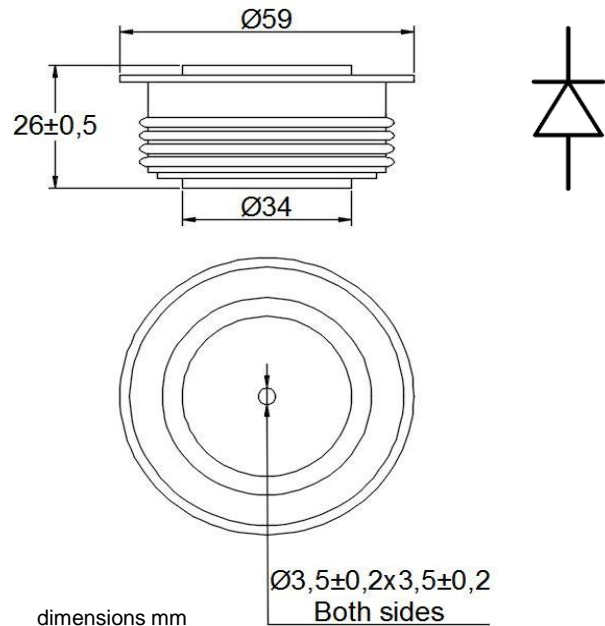
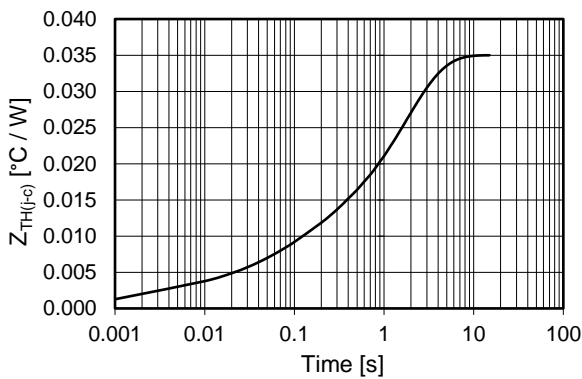
Maximum surge current d.s. cooled



Forward voltage drop



Thermal Impedance (j-c)



Ordering information GPDN2167-VV

VV: blocking voltage / 100 (e.g. 18 for 1800 V)

In the interest of product improvement Green Power Solutions reserves the right to change any specification given in this data sheet without notice.